

JUDGE ALONG

at the Missouri State Fair



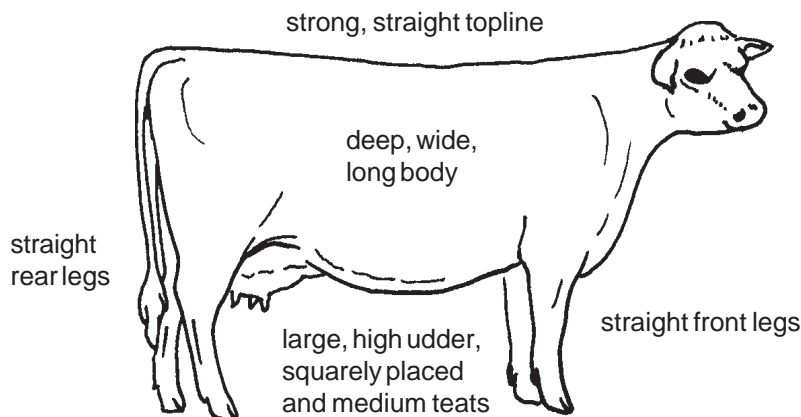
Dairy Cattle

What a judge might look for in dairy cattle:

- ◆ Cows that are tall and long.
- ◆ Cows that are straight and strong down their back, and walk on "correct" or fairly straight legs.
- ◆ Udders that are large enough to make a lot of milk but easily adapt to milking machines.
- ◆ Udders that are high enough above the ground to prevent them from getting injured easily.
- ◆ Udders that have squarely placed and medium-sized teats.
- ◆ Cows that show a lot of "dairy character", which means that they are using the food they consume to produce milk, not meat, so they may look somewhat skinny and bony.
- ◆ Large bodies (deep, wide and long) to hold the large amounts of feed necessary to produce large quantities of milk.

What a judge might look for in the show ring:

- ◆ Showmanship includes general appearance, especially cleanliness of the animal and the exhibitor's ability to lead and pose the animal in the ring.
- ◆ The cows are led around the ring for the judge's inspection.
- ◆ The judge places the cows in a line-up in the center of the ring.
- ◆ The judge may review the cows in a temporary line-up and change the order of the placing.
- ◆ A good showman is polite and courteous to other exhibitors and pays attention to both the animal and the judge at all times.



Look for similar "Judge Along" sheets near the other livestock show rings, or www.mostatefair.com

Test Your Knowledge . . .

1. Which food source has the greatest amount of calcium?
a. Beef b. pork c. veal d. milk

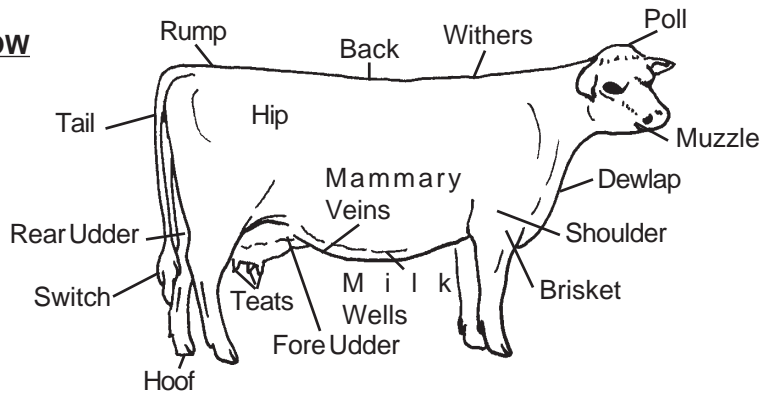
2. Dairy cows produce more milk in:
a. August b. June c. January d. March

3. Dairy cattle are ruminant animals which means they:
a. have hooves
b. have four stomachs and chew cud
c. have a simple stomach
d. have horns

(1) d, (2) d, (3) b



PARTS OF A DAIRY COW



You give it a try and see how your placings compare to the judge's (fill in the exhibitor's number):

Your Choice:

1st Place _____
 2nd Place _____
 3rd Place _____
 4th Place _____
 5th Place _____

Judge's Decision:

1st Place _____
 2nd Place _____
 3rd Place _____
 4th Place _____
 5th Place _____